

HUMA-AIR.COM

Market Leader In Accuracy

Welcome to Huma-Air. We design and manufacture brand- and model specific precision regulators for PCP air rifles.

By using only the highest quality materials such as aircraft grade aluminum, aluminum-bronze, chrome-moly steel and precision belleville springs, our ultra-compact regulators are high performing.



[Installation guide FX Bottle adaptor for AGT Vulcan III by HuMa-Air](#)

For adjustment tips, frequently asked questions and a complete list of installation manuals and instructions on how to adjust your Huma-Air regulator

<https://www.huma-air.com/Fitting-instructions>



Or go there directly by scanning the QR code

**Before you start, realize this:**

- Working on a high pressure rifle could potentially be harmful or lethal to you or bystanders if you do not know what you are doing.
- The pictures of the rifle parts in this manual are universal and meant as an example to explain the working principle. They might not be equal to the parts in your rifle.
- Do not attempt to install this adaptor yourself if you do not have a clear understanding of how these pcp rifles work.
- Do not attempt to install this adaptor if you are not skilled to work on an air rifle; contact your local gunsmith to do the fitting.
- Installation and operation is done completely at your own risk.
- Installing this adaptor might void your rifle's factory warranty.
- Your rifle may never be filled higher in pressure as stated in your rifle's manual.
- Do not attempt to fit this adaptor in another rifle than mentioned in our order conformation.
- We cannot be held liable for any accidents in relation to this regulator and its installation.

Before you start, make sure that the rifle is unloaded, remove the magazine and make absolutely sure ALL the air is drained from the pressure tube/bottle. If there is a pressure gauge, it will give you just an indication. Dry fire the rifle or follow the manufactures instructions and double check to make sure all the air is out of the rifle



If a regulator is fitted and there is no output pressure after filling the pressure tube, something might be wrong causing the airflow to block totally.

Please beware even though there is no output pressure, the pressure tube/bottle can be fully charged with high pressure air!!

If you are not able to relieve the pressure of the pressure tube according to the manufacture instructions or by dry firing the rifle then:

Contact a professional gunsmith to retrieve a solution!

- **DO NOT try to unscrew or to open the pressure tube in any way.**
- **DO NOT try to pierce/drill or to use force to open the pressure tube or unscrew parts in an attempt to relieve the blocked pressure.**
- **These actions can cause serious injury or death to you or bystanders**

Before you start, we would like to advice you to read our manual how to [read and adjust the regulator pressure](#) and our [General Adjustment Tips](#) to set up your rifle perfect.

This product is specifically designed to use the FX carbon bottle on the Vulcan III.

The adapter can be used in two configurations. Either with a valve mounted to be able to change bottles in the field. Or without a valve.

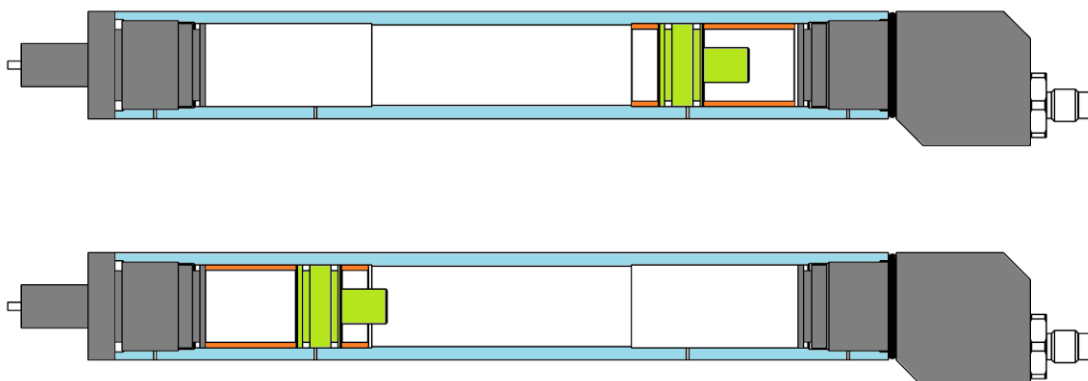
When using the adapter with the valve mounted the FX bottle can no-longer be filled with the fillprobe. But our Quickfill adaptor for FX pressure bottle needs to be used to fill the bottles separated from the rifle



When using the adapter without the valve, and you plan on changing the bottle with the rifle pressurized you will need to secure the regulator with the two standoffs supplied if that has not already been done.

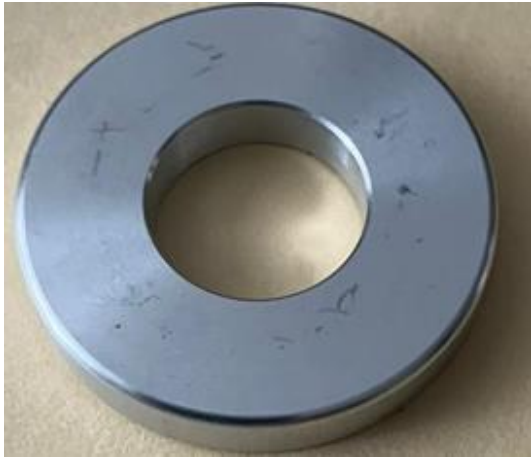
The Vulcan II can have its plenum tube configured for high and low power. This means that the regulator sits close to the rear action block in the low power configuration and for the high power configuration the regulator is placed close to the bottle connection.

Here is a schematic representation of the position of the regulator in both configurations, see also your manual supplied with the rifle. Marked in orange are the spacer rings and their configuration:



The regulator is supported in the tube by either one of two standoffs.

We'll focus on the top configuration (high power) as this will probably be, what most people will set the rifle to. The ring below will be under the regulator.



And the ring below should be delivered separate to the rifle.

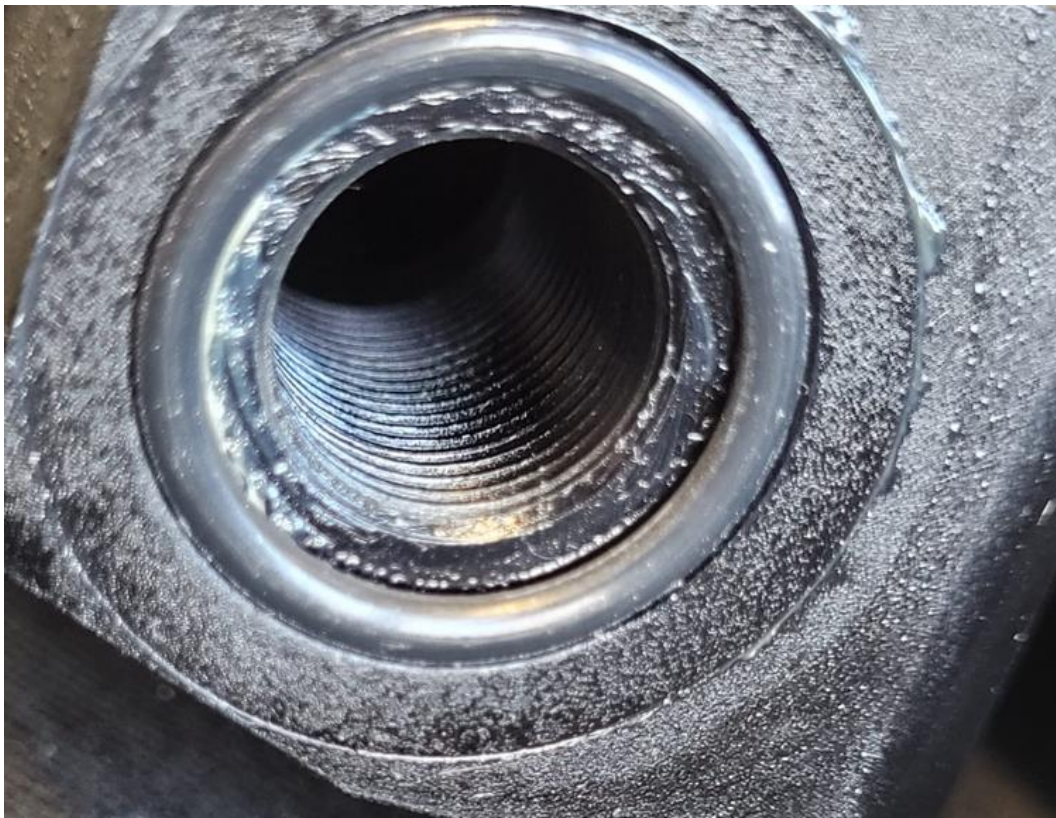


When using our adapter without the valve the regulator needs to be secured with the 2nd standoff also in place. This will be placed on top of the regulator and will prohibit the regulator to move towards the bottle when it is unscrewed.

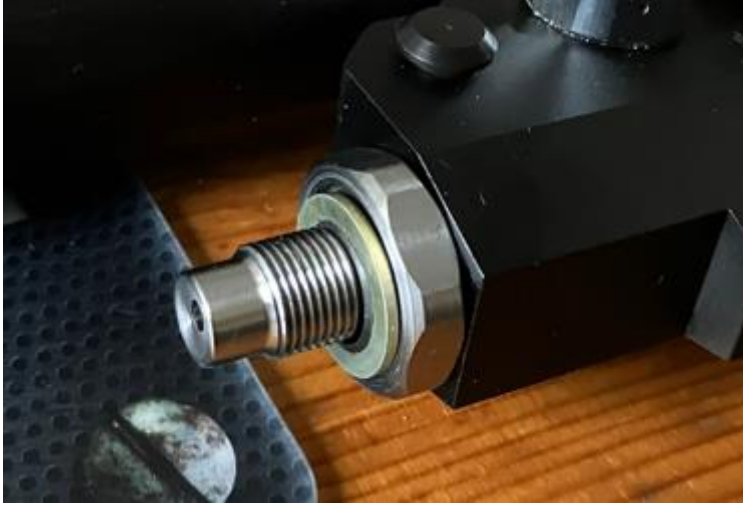


Reassemble the rifle

Once that part is finished it is just a matter of removing the bottle and screwing in our adaptor
Be sure that the original oring is in good condition and still in place.



Now secure the adaptor tightly with a hex wrench



After that it is just a matter of screwing on the FX bottle and your done!