



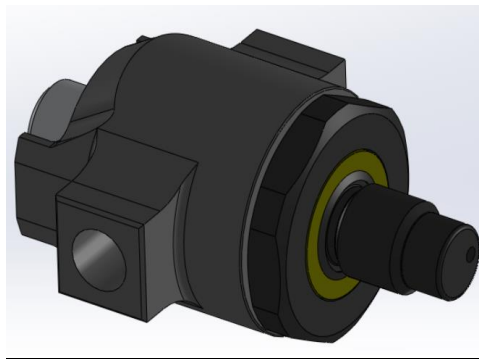
*Market Leader In Accuracy*

**Welcome to Huma-Air. We design and manufacture brand- and model specific precision regulators for PCP air rifles.**

---

By using only the highest quality materials such as aircraft grade aluminum, aluminum-bronze, chrome-moly steel and precision belleville springs, our ultra-compact regulators are high performing.

**Installation guide FX Impact MK1&MK2 first stage replacement regulator**



For adjustment tips, frequently asked questions and a complete list of installation manuals and instructions on how to adjust your Huma-Air regulator

<https://www.huma-air.com/Fitting-instructions>



Or go there directly by scanning the QR code

**Before you start, realize this:**

- Working on a high pressure rifle could potentially be harmful or lethal to you or bystanders if you do not know what you are doing.
- The pictures of the rifle parts in this manual are universal and used as an example to explain the working principle. They might not be equal to the parts in your rifle.
- Do not attempt to install this regulator yourself if you do not have a clear understanding of how these pcp rifles and regulators work.
- Do not attempt to install this regulator if you are not skilled to work on an air rifle; contact your local gunsmith to do the fitting.
- Installation and operation is done completely at your own risk.
- Installing this regulator might void your rifle's factory warranty.
- Your rifle may never be filled higher in pressure as stated in your rifle's manual.
- Do not attempt to fit this regulator in another rifle as mentioned in our order confirmation.
- These regulators are not suitable to use as a CO2 to HPA conversion, this could potentially be harmful or lethal to you or bystanders.
- We cannot be held liable for any accidents in relation to this regulator and its installation.

**Before you start, make sure that the rifle is unloaded, remove the magazine and make absolutely sure ALL the air is drained from the pressure tube. If there is a pressure gauge, it will give you just an indication. Dry fire the rifle or follow the manufacturer's instructions and double check to make sure all the air is out of the rifle**



**If the regulator is fitted and there is no output pressure after filling the pressure tube, something might be wrong causing the airflow to block totally.**

**Please beware even though there is no output pressure, the pressure tube/bottle is fully charged with high pressure air!!**

**If you are not able to relieve the pressure of the pressure tube according to the manufacturer's instructions or by dry firing the rifle then:**

**Contact a professional gunsmith to retrieve a solution!**

- **DO NOT try to unscrew or to open the pressure tube in any way.**
- **DO NOT try to pierce/drill or to use force to open the pressure tube or unscrew parts in an attempt to relieve the blocked pressure.**
- **These actions can cause serious injury or death to you or bystanders**

Before you start, we would like to advise you to read our manual how to [read and adjust the regulator pressure](#) and our [General Adjustment Tips](#) to set up your rifle perfect.

**Before you start, read the full manual.**

**This manual is a guideline and can be different in detail compared to your rifle.**

### **Important Safety Notes:**

- These regulators are not suitable for stand-alone pressure bottles/buddy bottles.
- The maximum working pressure of this model is 300 Bar.
- Do not exceed the factory advised fill pressure of your rifle!

## **Fitting of the regulator**

As standard the package consists of:

Stainless steel regulator body

Blackened steel bottle adapter (screwn onto the regulator body)

Aluminium collar

G1/8" gauge



The regulator will extend the bottle forward approximately 31mm.

The parts will be screwn together hand tight. For assembly best to separate the two.



**Pressure setting of your new regulator**

The regulator is delivered in a range of approximately 110 to 210 bar output pressure.

The set pressure of the regulator is marked on the label of the bag.

Setting the pressure can be done by adjusting the bronze colored set screw that is visible after removing the black bottle adapter.



A 5 minutes turn counter clockwise will give a pressure increase of about 4-5 bar. Or ca 25-30 bar for  $\frac{1}{2}$  a turn

The pressure range of this regulator is between 110 and 210 bar. Use a small screwdriver that fits the internal (2<sup>nd</sup> screwdriver slot of the regulator adjustment screw)

**Removing OEM FX bottle adapter and fill valve**

Before installation make sure that the bottle is removed and your rifle is completely empty!  
After you have confirmed this start with removing the trigger guard to give you good access to the FX first stage.



Unscrew the the 4 M3 screws using a 2,5mm hex key.

Now that the triggerguard is removed and you have good access to the OEM bottle adapter you can unscrew this using a good fitting wrench. Either fixed 24mm wrench or socket or an adjustable one.



Now remove the fillvalve using the adjustable wrench or a 14mm spanner. You will be reusing the fillvalve.

The FX bottle adapter can be pretty tight and might require some force to remove. Take care not to scratch your gun during this procedure.



Now you can reinstall the fill valve in our supplied collar.

Note that the collar has two different connections. One has a flat bottom and is less deep than the other.

The connection for the gauge has no step and has a flat bottom





The connection for the fillvalve has a step in it and a shallow slot running across the bottom.



The fill valve can be screwn in and just tightened like it was on the gun. For the gauge choose one of the two orings supplied and screw in the gauge until it touched the oring then between  $\frac{1}{4}$  and  $\frac{1}{2}$  a turn further until it lines up with the bore of the collar.

Choose which side of the action you want the gauge to point to. This will determine how the gauge will be aligned



Here we opted to align it to have the gauge on the left side of the action. When alignment can't be made please swap the oring for the other one supplied.

After installation the collar looks like this



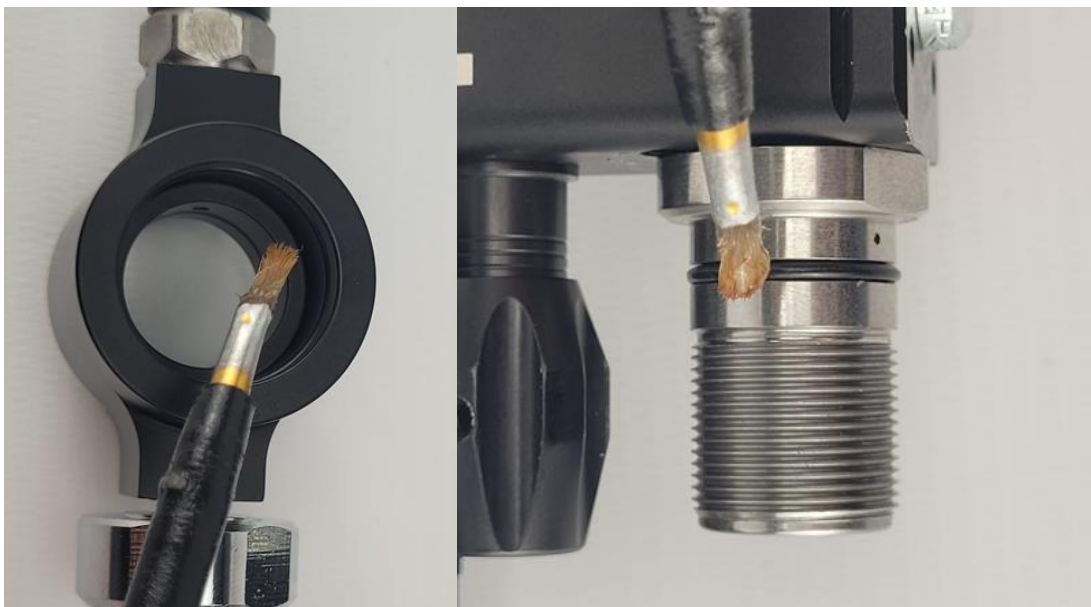
Keep that adapter for possible later use. Now take the regulator with bottle adapter from its bag and separate actual regulator and bottle connector from each other. The regulator can now be screwed into the action of the rifle. Lubricate the bonded washer prior to installation



Now tightly secure the regulator to the action using the wrench,



Lubricate the external oring on the regulator and the internal oring on the collar.



Now you can screw in our regulator to the rifle action. After screwing it in by hand tighten it securely to the action using a 22mm or adjustable wrench.



Next step is to plug the fill port hole with the supplied Blindplug.



Now the collar has to be slid over the regulator, During this stage determine at what side you want the fill port. We opted for the right side. The collar has two anti- rotational tabs that locate on either side of the action.



Last step is to screw in the bottle connector, add some silicone to the small diameter to help seat the oring





After that tighten the bottle connector using a adjustable wrench or a socket



Reinstall the triggerguard and your installation will be done



Now reinstall the bottle and check for leaks



Note that in the example above we show the regulator with the gauge on the same side as the “old” fill pressure gauge. Fill pressure will be shown by the gauge on the collar and 1<sup>st</sup> stage regulator pressure will be shown by the old gauge.

Enjoy your HuMa-regulated impact!