

HUMA-AIR.COM

Market Leader In Accuracy

Welcome to Huma-Air. We design and manufacture brand- and model specific precision regulators for PCP air rifles.

By using only the highest quality materials such as aircraft grade aluminum, aluminum-bronze, chrome-moly steel and precision belleville springs, our ultra-compact regulators are high performing with less than 1% fluctuation.

Regulator installation guide Artemis / Spa PR900W



For adjustment tips, frequently asked questions and a complete list of installation manuals and instructions on how to adjust your Huma-Air regulator

<https://www.huma-air.com/Fitting-instructions>



Or go there directly by scanning the QR code



Before you you start, realize this;

- Working on a high pressure rifle could potentially be harmful or lethal to you or bystanders if you do not know what you are doing.
- The pictures of the rifleparts in this manual are universal and mend as an example to explain the working principle. They might not be equal to the parts in your rifle.
- Do not attempt to install this regulator yourself if you do not have a clear understanding of how these pcp rifles and regulators work.
- Do not attempt to install this regulator if you are not skilled to work on an air rifle; contact your local gunsmith to do the fitting.
- Installation and operation is done completely at your own risk.
- Installing this regulator might void your rifle's factory warranty.
- Your rifle may never be filled higher in pressure as stated in your rifle's manual.
- Do not attempt to fit this regulator in another rifle as mentioned in our order conformation.
- These regulators are not suitable to use as a CO2 to HPA conversion, this could potentially be harmful or lethal to you or bystanders.
- We cannot be held liable for any accidents in relation to this regulator and its installation.

Before you start, make sure that the rifle is unloaded, remove the magazine and make absolutely sure ALL the air is drained from the pressure tube. If there is a pressure gauge, it will give you just an indication. Dry fire the rifle or follow the manufactures instructions and double check to make sure all the air is out of the rifle



If the regulator is fitted and there is no output pressure after filling the pressure tube, something might be wrong causing the airflow to block totally.

Please beware even though there is no output pressure, the pressure tube is fully charged with high pressure air!!

If you are not able to relieve the pressure of the pressure tube according to the manufacture instructions or by dry firing the rifle then:

Contact a professional gunsmith to retrieve a solution!

- **DO NOT try to unscrew or to open the pressure tube in any way.**
- **DO NOT try to pierce/drill or to use force to open the pressure tube or unscrew parts in an attempt to relieve the blocked pressure.**
- **These actions can cause serious injury or death to you or bystanders**

Please read our [“General adjustment tips”](#) and [“How to adjust the regulator pressure properly”](#) It will help you getting the best performance in the tuning process.

1. Make sure your pressure tube is totally empty
2. Remove the action from the stock.
3. Double check / check again if there is absolutely no pressure inside the pressure tube. Only when absolutely certain proceed to remove the pressure gauge and unscrew the pressure gauge off it's adapter.



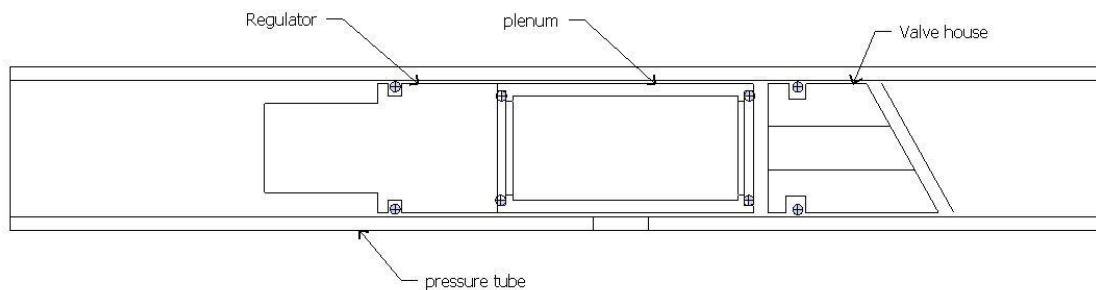
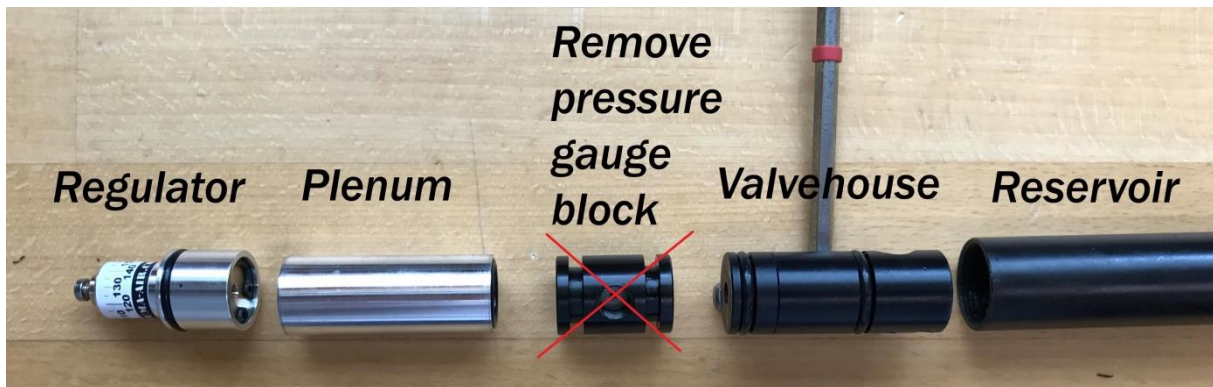
4. Take a pair of pliers to remove the end cap. Use a piece of leather (belt) to prevent damage to the end cap, and unscrew the end cap. You can also push a rod trough the fillhole and unscrew it.
5. You should be able to push the pressure gauge assembly block a little forward into the tube, using an allen wrench o wooden dowel that you place in the hole of the pressure gauge.
6. Make yourself a little “tool” to remove the pressure gauge assembly. With the little hook on the end of your tool you can pull out the assembly.





The regulator can only be fitted without the pressure gauge/pressure gauge block

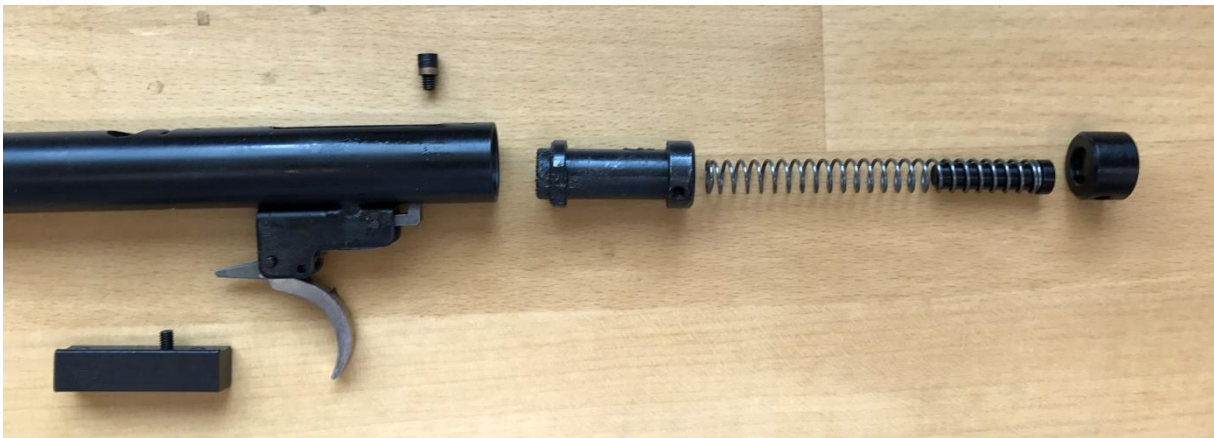
See the picture and schedule below for the working principle:



It is not strictly necessary to remove the valve house for fitting the regulator. Due to the poor quality of the Chinese o-ring we advice to leave it were it is.

We do provide some extra spacers with the regulator to give the valve return spring some more preload to reduce the air consumption. So if you want to remove the valve, it needs to be pushed out from the backside of the rifle to the front. We also supply some extra good quality orings for the valve and the fillcap. See the pics below

Remove the breechblock and transferport



Now you can push the valvehouse out and open it up. You can use the provided spacers to give the valvespring more preload. Replace the o-ring for the supplied new o-rings and place the valve back.

NOTE: be careful to guide the o-rings pass the holes in the tube so they don't get damaged and make sure the transfer port hole is aligned with the hole in the pressure tube.

6. The regulator is also equipped with a M3 bolt. You can attached a piece of fishing wire to this bolt to remove the regulator easily for adjustment. Also be careful not to turn the setscrew by accident. You can use a drop of nail polish on the side to fixate it.

7. Now you can use a piece of PVC electric installation pipe to push the regulator in. Please do not push on the set screw because this can adjust the regulator pressure.

Tip; A little silicone grease (will aid in installation and help prevent damage to the o-rings. use only silicone grease and NOTHING ELSE)

8. Assemble the rifle back again

9. Reinstall the fillcap and fill the rifle a bit. Check around the pressure gauge if the connection is 100% air-tight. You can use water with some soap for it. Keep the hole/pressure gauge pointed to the ground so no soap water can get into the tube.

If you do not like the hole in the stock were the gauge used to be, you can place the gauge in a piece of polystyrene foam and push this into the hole in the stock. The gauge won't work but it will look better.



11. The rifle has a fixed hammer spring tension. If you know what you are doing you could adjust the hammer spring tension by shortening it. Note this cannot be undone!!

When you are testing/adjusting your rifle using a chronograph, please remember to take sufficient time between the shots for the regulator to recharge the regulated chamber volume.